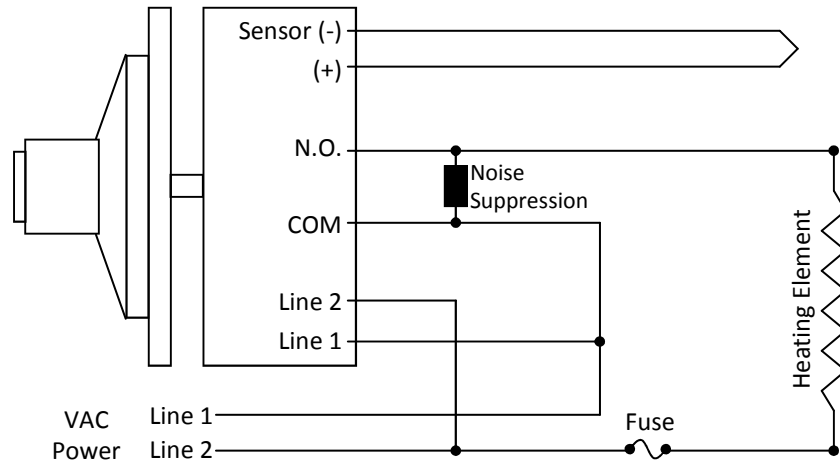


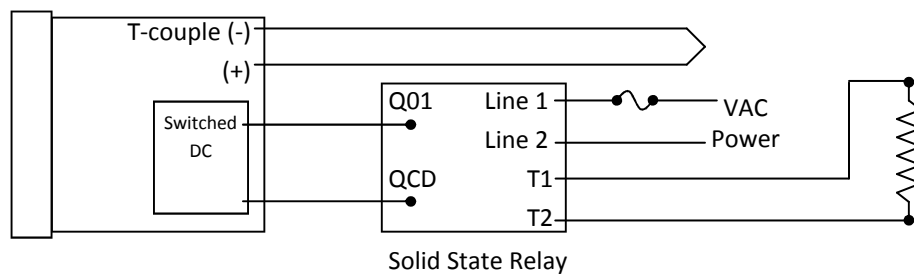
TEMPERATURE AND POWER CONTROL WIRING

ADJUSTABLE KNOB THERMOSTAT CONTROL OUTPUT WIRING (SINGLE PHASE)



N.O. (Normally Open) and COM (Common) contacts of the mechanical relay operate as switch contacts. When the sensor detects low temperature, the contacts close and provide power to the heating element.

SOLID STATE SWITCH CONTROL OUTPUT WIRING (SINGLE PHASE)



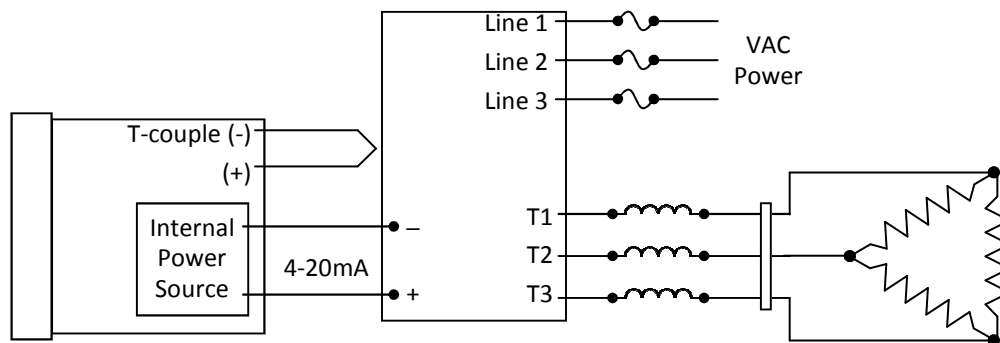
When the sensor detects low temperature, the switched DC output (transistor) turns on, a voltage difference develops across Q01 and QCD, turns the solid state relay on, and provides power to the heating element.

TEMPERATURE AND POWER CONTROL WIRING

Operation of 3-Phase Control Output Wiring

Controllers normally operate at 120/240 VAC single-phase with an output signal of 4-20mA. When the sensor detects low temperature, the internal power source will send a 4-20mA output signal to the contactor, which will provide power to the chosen heating element configuration.

3 Phase DELTA Connection



3 Phase WYE Connection

