

## Standard Cloth Insulated Heating Jackets

BriskHeat® offers Standard Cloth Heating Jackets for the following outer diameters:

Nominal O.D.	
0.25"	6mm
0.38"	10mm
0.50"	13mm
1.50"	40mm
2.00"	50mm
3.00"	80mm
4.00"	100mm
6.00"	150mm



### Features:

- Patented grounded heating element
- Uniform heat distribution
- Fully insulated
- Modular design
- No waiting for measurements or engineering
- Power/Jumper leads allow jackets to be interconnected in the field
- High-limit thermal switch for temperatures up to 392 F (200C) (for higher temperatures, consult factory)



### Applications:

- CVD
- Etch
- Diffusion
- Vacuum Chambers
- Gas Transfer Lines
- Vacuum Lines
- Exhaust Lines
- High Energy Physics
- Process Heating

### To heat a system with our standard cloth jackets follow the steps below:

1. Select jackets needed for straight sections.
2. Select jackets needed for 45 and 90 degree Elbows, Flanges, and Unistrut clamps.
3. Install the jackets on your piping system and secure with the VELCRO® flaps.
4. Link the jackets together to create heated zones as required.
5. Connect to control system and heat.

### Benefits:

- Grounding improves safety
- Clean room compatible
- No need to apply separate insulation
- Reduced particle buildup
- Reduced down-time
- Greater yields
- Ease of installation
- Easily removed and reinstalled

**BriskHeat®**

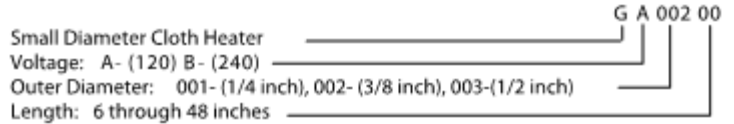
## Small Diameter Standard Cloth Insulated



To select the correct small diameter cloth heater, use this Part Number Guide. The example given is for a Small Diameter Cloth Heater, 120VAC, 3/8" diameter, and 6 inches long.

**BriskHeat®** Small Diameter Cloth Heaters provide the heat and insulation necessary for small diameter gas or liquid lines. Applications include reducing gas condensation, viscosity control, and process heating. For example, by reducing condensate deposits in BCL<sub>3</sub>, WF<sub>6</sub>, or other gas systems, higher yields will result.

### Small Diameter Cloth Heater Part Number Guide



#### Features:

- Patented grounded heating element
- Uniform heat distribution
- Built-in insulation
- Modular design
- Power/Jumper leads allow jackets to be interconnected in the field
- High-limit thermal switch
- No waiting for measurements or engineering



#### Benefits:

- Grounding improves safety
- No need to apply separate insulation
- Reduced particle buildup
- Reduced down-time
- Greater yields
- Ease of installation
- Easily removed and reinstalled

#### Specifications:

- Fiberglass Cloth Liner
- 1/4" (6.4mm) Fiberglass Insulation
- Aluminized Cloth Facing
- 120 or 240VAC Operating Voltage
- Operating temperatures up to 392°F (200°C)
- 0°F (-18°C) Minimum Exposure Temperature
- Patented Grounded Heating Element
- 3" (76.2mm) Power/Jumper Leads
- 1000 VDC Dielectric Strength
- Built-in 392°F (200°C) High-Limit Thermal Cut-Off switch
- Configure-to-Order configurations including tees, elbows, valves, and flanges are available. Consult factory for more detail.

#### Approximate Total Wattage

Length (inches)	1/4 inch O.D.	3/8 inch O.D.	1/2 inch O.D.
6	12*	18	24
7	14*	21	27
8	16	24	31
9	18	26	35
10	20	29	39
11	22	32	43
12	24	35	47
13	26	38	51
14	27	41	55
15	29	44	59
16	31	47	63
17	33	50	67
18	35	53	71
19	37	56	75
20	39	59	79
21	41	62	82
22	43	65	86
23	45	68	90
24	47	71	94
25	49	74	98
26	51	77	102
27	53	79	106
28	55	82	110
29	57	85	114
30	59	88	118
31	61	91	122
32	63	94	126
33	65	97	130
34	67	100	133
35	69	103	137
36	71	106	141
37	73	109	145
38	75	112	149
39	77	115	153
40	79	118	157
41	80	121	161
42	82	124	165
43	84	127	169
44	86	130	173
45	88	132	177
46	90	135	181
47	92	138	184
48	94	141	188

\* Not available in 240V

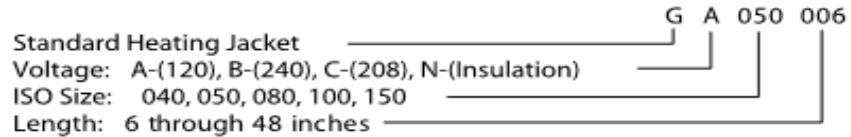


## Straight Cloth Insulated Heating Jackets



To select the correct jacket use this Part Number Guide. The example given is for a standard jacket, 120 volt, 2-inch diameter, and 6 inches long.

### Straight Jacket Part Number Guide



### Jacket Construction:

- Fiberglass Cloth Liner
- 1/4" (6.4mm) Fiberglass
- Insulation
- Aluminized Cloth Facing
- 0°F (-18°C) Minimum Exposure Temperature
- Patented Grounded Heating Element
- 6" (152mm) Power/Jumper Leads
- 1000 VDC Dielectric Strength
- Built-in 392°F (200°C) High Limit Thermal Cut-Off switch (for higher temperatures, consult factory)
- VELCRO® Closure



**BriskHeat®** offers Standard Cloth Heating Jackets in any length from 6" to 48" in 1" increments for the following outer diameters:

Nominal Tube O.D.	
1.5"	40mm
2.00"	50mm
3.00"	80mm
4.00"	100mm
6.00"	150mm

The table below lists the approximate total wattage per jacket\*

Length (inches)	1.5 inch O.D.	2 inch O.D.	3 inch O.D.	4 inch O.D.	6 inch O.D.
6	19	24	40	54	77
7	22	28	47	61	91
8	25	33	54	72	103
9	29	37	61	81	117
10	32	47	67	89	129
11	35	53	75	97	140
12	47	56	81	105	155
13	50	62	87	115	169
14	53	66	96	126	179
15	57	72	101	134	196
16	61	76	111	143	207
17	64	80	115	150	220
18	68	84	120	159	232
19	72	91	131	166	246
20	75	95	137	177	262
21	79	98	145	189	273
22	84	105	150	195	284
23	86	108	153	204	296
24	91	112	164	214	307
25	95	120	168	218	321
26	98	122	177	235	335
27	104	127	183	244	353
28	105	130	192	244	363
29	109	139	196	255	372
30	113	142	200	263	385
31	118	147	212	272	402
32	123	151	213	279	410
33	123	158	225	289	434
34	130	159	227	300	448
35	134	168	241	314	449
36	136	168	246	315	467
37	140	178	252	332	473
38	145	180	256	337	493
39	146	183	265	346	502
40	151	189	273	350	510
41	153	191	278	358	532
42	157	203	280	375	550
43	161	207	288	378	553
44	164	206	304	397	575
45	173	218	301	403	581
46	178	216	318	409	587
47	176	221	313	417	604
48	182	226	332	426	620

Other lengths available. Contact factory.

\* Total wattage listed for 120VAC models. Slight variations may occur with other voltage models.



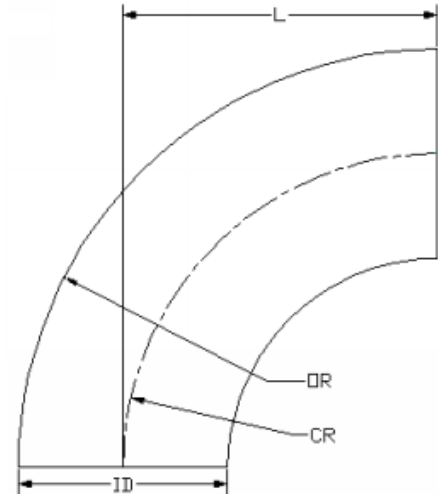
## 90° Elbow Cloth Insulated Heating Jackets

### 90° Elbow

ISO Size		120VAC		240VAC		208VAC	
		Watts	Part No.	Watts	Part No.	Watts	Part No.
1.5	40	11	GA040E90	11	GB045E90	11	GC040E90
2	50	19	GA050E90	19	GB050E90	19	GC050E90
3	80	48	GA080E90	41	GB080E90	41	GC080E90
4	100	83	GA100E90	83	GB100E90	83	GC100E90
6	150	183	GA150E90	183	GB150E90	183	GC150E90

### Jacket Dimensions

ISO Size	ID	ID		L		CR		OR	
		inches	mm	inches	mm	inches	mm	inches	mm
1.5	40	1.50	38.1	2.25	57.2	2.25	57.2	3.00	76.2
2	50	2.00	50.8	3.00	76.2	3.00	76.2	4.00	101.6
3	80	3.00	76.2	4.25	114.3	4.50	114.3	6.00	152.4
4	100	4.00	101.6	6.00	152.4	6.00	152.4	8.00	203.2
6	150	6.00	152.0	9.00	228.6	9.00	228.6	12.00	304.8



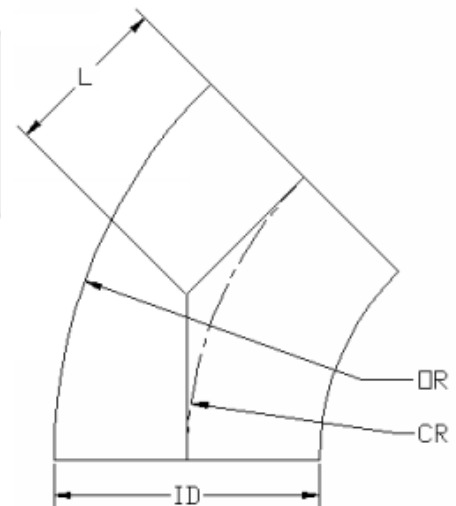
## 45° Elbow Cloth Insulated Heating Jackets

### 45° Elbow

ISO Size		120VAC		240VAC		208VAC	
		Watts	Part No.	Watts	Part No.	Watts	Part No.
1.5	40	6	GA040E45	6	GB040E45	6	GC040E45
2	50	10	GA050E45	10	GB050E45	10	GC050E45
3	80	21	GA080E45	21	GB080E45	21	GC080E45
4	100	37	GA100E45	37	GB100E45	37	GC100E45
6	150	91	GA150E45	91	GB150E45	92	GC150E45

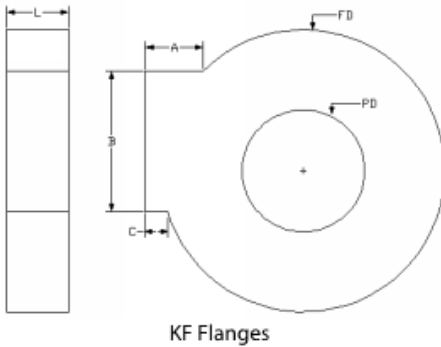
### Jacket Dimensions

ISO Size	ID	ID		L		CR		OR	
		inches	mm	inches	mm	inches	mm	inches	mm
1.5	40	1.50	38.1	0.94	15.9	2.25	57.2	3	76.2
2	50	2.00	50.8	1.25	31.8	3.00	76.2	4	101.6
3	80	3.00	76.2	1.88	47.6	4.50	114.3	6	152.4
4	100	4.00	101.6	2.50	63.5	6.00	152.4	8	203.2
6	150	6.00	152.0	3.75	95.25	9.00	228.6	12	304.8



**BriskHeat®**

## KF Flange/Clamp Cloth Insulated Heating Jackets



KF Flanges

ISO Size	Watts	120VAC		240VAC		208VAC	
		Watts	Part No.	Watts	Part No.	Watts	Part No.
1.5	40	7	GA040FLA	7	GB040FLA	7	GC040FLA
2	50	12	GA050FLA	12	GB050FLA	12	GC050FLA

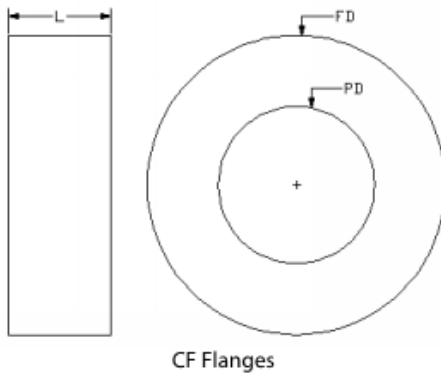
KF Flange Jacket Dimensions

ISO Size	L	PD		FD	
		inches	mm	inches	mm
1.5	40	1	25.4	2.94	74.6
2	50	1	25.4	4.63	117.5

KF Flange Jacket Dimensions (continued)

ISO Size	A	B		C	
		inches	mm	inches	mm
1.5	40	1.81	46.0	2.44	61.9
2	50	0.94	23.8	2.31	58.7

## CF Flange/Clamp Cloth Insulated Heating Jackets



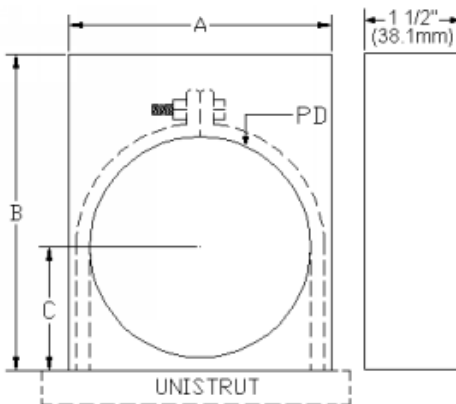
CF Flanges

ISO Size	Watts	120VAC		240VAC		208VAC	
		Watts	Part No.	Watts	Part No.	Watts	Part No.
3	80	33	GA080FLA	33	GB080FLA	33	GC080FLA
4	100	56	GA100FLA	56	GB100FLA	56	GC100FLA
6	150	91	GA150FLA	91	GB150FLA	91	GC150FLA

CF Flange Jacket Dimensions

ISO Size	L	PD		FD	
		inches	mm	inches	mm
3	80	2.13	54.0	3.00	76.2
4	100	2.13	54.0	4.00	101.6
6	150	2.13	54.0	6.00	152.0

## Unistrut Clamp Cloth Insulated Heating Jackets



Unistrut Clamps

ISO Size	Watts	120VAC		240VAC		208VAC	
		Watts	Part No.	Watts	Part No.	Watts	Part No.
1.5	40	7	GA040UNI	7	GB040UNI	7	GC040UNI
2	50	9	GA050UNI	9	GB050UNI	9	GC050UNI
3	80	13	GA080UNI	13	GB080UNI	13	GC080UNI
4	100	18	GA100UNI	18	GB100UNI	18	GC100UNI
6	150	26	GA150UNI	26	GB150UNI	26	GC150UNI

Unistrut Jacket Dimensions

ISO Size	PD	A		B		C	
		inches	mm	inches	mm	inches	mm
1.5	40	1.00	38.1	3.25	82.6	1.00	25.4
2	50	2.00	50.8	2.75	69.9	1.25	31.8
3	80	3.00	76.2	3.75	95.3	1.75	44.5
4	100	4.00	101.6	4.75	120.7	2.25	57.2
6	150	6.00	152.0	6.75	171.5	3.25	82.6

## Accessories for Cloth Insulated Heating Jackets

### Thermocouples:

All thermocouples and thermocouple extensions are made of 24 AWG fiberglass insulated wire and come with a mini connector.

#### J Style thermocouples

Part Number	Length
TAJN05-AA	5
TAJN10-AA	10
TAJN25-AA	25

#### J Style thermocouple extensions

Part Number	Length
TAJN05-AD	5
TAJN10-AD	10
TAJN25-AD	25

#### K Style thermocouples

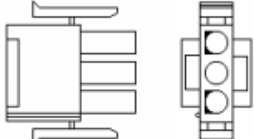
Part Number	Length
TAKN05-DA	5
TAKN10-DA	10
TAKN25-DA	25

#### K Style thermocouple extensions

Part Number	Length
TAKN05-DF	5
TAKN10-DF	10
TAKN25-DF	25

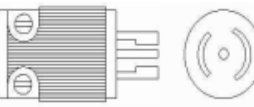
### Power cords:

Mate & lock



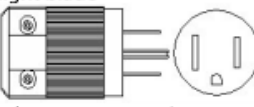
Rated 15amps up to 600VAC

Twist lock



Rated 15amps 125VAC

Straight blade



Rated 15amps 125VAC

Up to 600VAC  
 Male: mate & lock  
 Female: mate & lock \*600VAC

Part Number	Length
PB7205-LR	5
PB7210-LR	10
PB7225-LR	25

240VAC  
 Male: mate & lock  
 Female: straight blade \*240VAC

Part Number	Length
PB4205-RR	5
PB4210-RR	10
PB4225-RR	25

Male: mate & lock  
 Female: twist lock \*240VAC

Part Number	Length
PB4205-IR	5
PB4210-IR	10
PB4225-IR	25

120VAC  
 Male: mate & lock  
 Female: straight blade \*120VAC

Part Number	Length
PB1205-BR	5
PB1210-BR	10
PB1225-BR	25

Male: mate & lock  
 Female: twist lock \*120VAC

Part Number	Length
PB1205-CR	5
PB1210-CR	10
PB1225-CR	25

Male: twist lock  
 Female: mate & lock \*240VAC

Part Number	Length
PB4205-LT	5
PB4210-LT	10
PB4225-LT	25

Male: straight blade  
 Female: mate & lock \*240VAC

Part Number	Length
PB4205-LC	5
PB4210-LC	10
PB4225-LC	25

Male: twist lock  
 Female: mate & lock \*120VAC

Part Number	Length
PB1205-LG	5
PB1210-LG	10
PB1225-LG	25

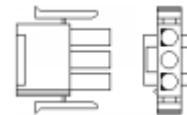
Male: straight blade  
 Female: mate & lock \*120VAC

Part Number	Length
PB1205-LB	5
PB1210-LB	10
PB1225-LB	25

Contact factory for other voltages

Termination plug: 40914

This plug is required to cap off the jumper of the LAST jacket in a series, to prevent accidental contact with the power leads



**BriskHeat®**