

Reduce Gas Waste

Due to condensation, gas is often wasted because it will sit there in a liquid state when needed most. Cylinders are then not filled to a full level, wasting money on each fill-up. This can be alleviated by using our Gas Cylinder Warmer. The warmer creates a convection current and increases pressure inside; improving process control and reducing wasted gas that has condensed. Gases known to benefit from this process are SF₆, propane, nitrogen, oxygen, BCl₃, WF₆, and HF.

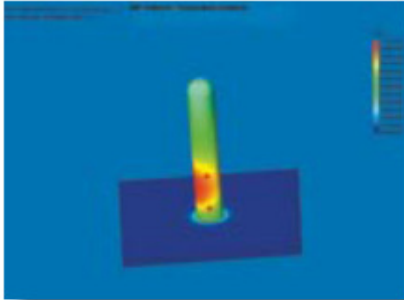


Figure 1: Heat output of other warmers. Red indicates highest possible heat. Notice only traces of heat.

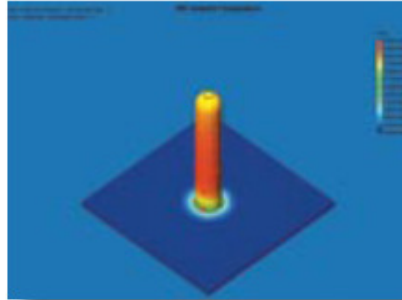


Figure 2: Heat output of BriskHeat Gas Cylinder Warmers. Red indicates highest possible temperature. Notice nearly uniform heat.



The Facts

- More Efficient Heat with its Built-in Insulation
- Self-Regulating Grounded Heating Element for your Safety
- Maintains Bottom between 32-54°C (90-130°F)
- Maintains Top between 26-49°C (80-120°F)
- Moisture and Oil Resistant
- Durability gives Warmer a Long-Life
- Available in 120 and 240 Volts
- Up to 150 Watts

In order to design your perfect gas cylinder warmer, we will need to know the following information: size of the cylinder, what is inside the cylinder, what temperature do you want the gas to reach and how fast. Finally, how cold does it get on a really cold day?

Hazardous-Area Ready Model- When designing your hazardous-area model, we will need to know what the auto-ignition point is for your gas.



Class I Division 1 Groups C and D

Unsurpassed Heat Uniformity

Our Gas Cylinder Warmer has unsurpassed heat uniformity. See the images above to compare BriskHeat Gas Cylinder Warmers (Figure 2) to other warmers (Figure 1).

Easy Installation and Removal

Installation is a breeze with its simple built-in VELCRO system.

Useful Accessories

Under Cylinder Insulator Pad- Placed between cylinder and floor. Further insulates the cylinder from heatsinks such as a concrete floor.

Valve Cover- Placed on top. Reduces the amount of heat loss through the top of the cylinder.

Part Number	Description
GCW/TOP	Gage/Valve Cover
GCW/12B	Bottom Insulator for 8" Cylinder
GCW/15B	Bottom Insulator for 9" Cylinder
GCW/18B	Bottom Insulator for 15" Cylinder



BriskHeat